

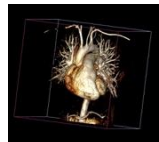
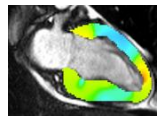
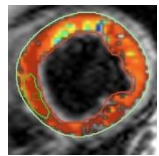
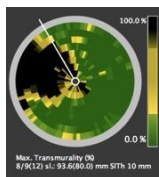
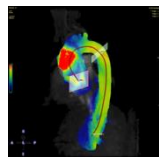
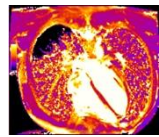
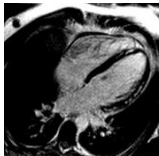
# THE CLINICAL APPLICATION OF CARDIOVASCULAR MRI



April 04/13/20, 2027 – LEVEL I



## Program:



### April 04, 2027

18:00-18:20 PM: The Role of CMR

*Jeanette Schulz-Menger \*1*

18:25-19:15 PM: Technical aspects / basic

*Thoralf Niendorf \*2*

19:20-19:50 PM: Cardiac function / basic

*Thomas Elgeti \*1*

19:55-20:35 PM: Principles of myocardial tissue characterization

*Jeanette Schulz-Menger \*1*

20:40-21:00 PM: Q&A

*Jeanette Schulz-Menger \*1*

### April 13, 2027

18:00-18:45 PM: Valvular heart disease and large vessels

*Jeanette Schulz-Menger \*1*

18:50-19:50 PM: Cardiomyopathies and inflammatory myopericardial syndrome

*Jeanette Schulz-Menger \*1*

19:55-20:45 PM: Case demonstration

*Alexander Schulz \*4*

20:45-21:00 PM: Q&A

*Jeanette Schulz-Menger \*1*

### April 20, 2027

18:00-19:00 PM: Coronary artery disease

*Fabian Mühlberg \*3*

19:05-19:50 PM: Cardiac and paracardiac masses

*Thomas Elgeti \*1*

19:55-20:45 PM: Case demonstration

*Alexander Schulz \*4*

20:50-21:00 PM: Course summary and adjourn

*Jeanette Schulz-Menger \*1*



This course is recognized as fulfilling the requirements for level I certification! 12 CME-Credits

#### Organized by:

Circle institute GmbH  
info@circle-institute.com  
www.circle-institute.com



#### Scientific Directors:

Prof. Dr. Jeanette Schulz-Menger  
Prof. Dr. Thomas Elgeti  
Charité Universitätsmedizin Berlin

#### Speakers:

\*1) Charité Universitätsmedizin Berlin  
\*2) Max Delbrück Centrum  
\*3) Helios Klinikum Berlin Buch  
\*4) Universität Göttingen